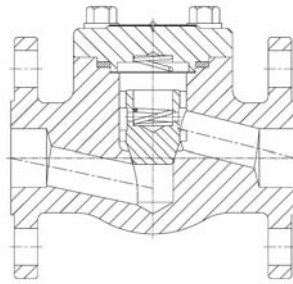
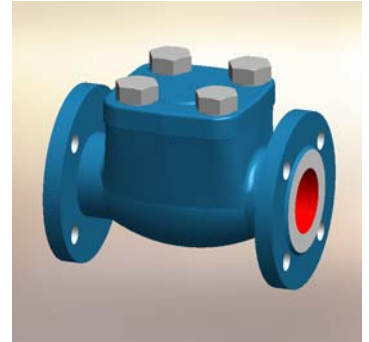


**Design acc. :**  
**AD 2000 A4**  
**ATEX 2014/34/EU**  
**API 602**  
**Flanged ends : EN 1092-1.**  
**Face to face : EN 558-1 .**  
**Test and inspection : EN 12266.**  
**Body : C22.8/1.4401**



**FIG : 441**

**Page 1-2**



**FIG : 441**

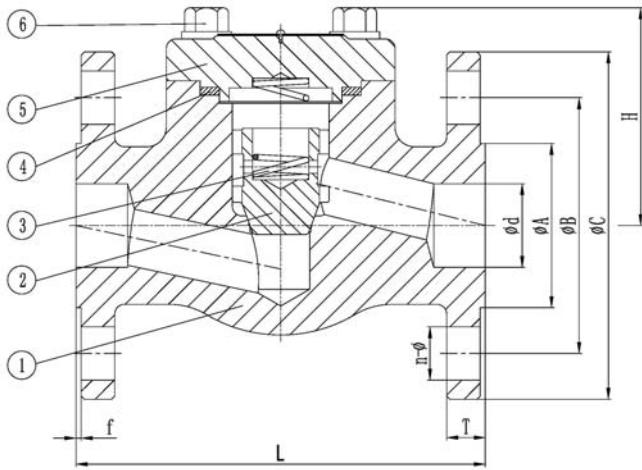


FIG.	PN	Material	Range
145.441	40	C22.8	DN15-DN50
235.441	40	1.4401	DN15-DN50

**Design acc. :**  
**AD 2000 A4**  
**ATEX 2014/34/EU**  
**API 602**  
**Flanged ends : EN1092-1.**  
**Face to face : EN 558-1 .**  
**Test and inspection : EN12266.**

**Material list**

NO.	Part	Material	
		FIG.: 142.441 / 143.441	FIG.: 232.441 / 233.441
1	Body	C22.8+STL	1.4401
2	Disc	1.4021	1.4401+STL
3	Spring	1.4301	1.4401
4	Gasket	1.4301+Graphite	1.4401+Graphite
5	Bonnet	C22.8	1.4401
6	Bolt	1.7225 (GC)	A4-70/A2-70

**Dimension List**

PN	DN	L	H	d	A	B	C	T	f	N-Φ
40	15	130	54.5	15	45	65	95	16	2	4-14
	20	150	54.5	20	58	75	105	18	2	4-14
	25	160	72	25	68	85	115	18	2	4-14
	32	180	81	32	78	100	140	18	2	4-18
	40	200	94	40	88	110	150	18	3	4-18
	50	230	112	50	102	125	165	18	3	4-18